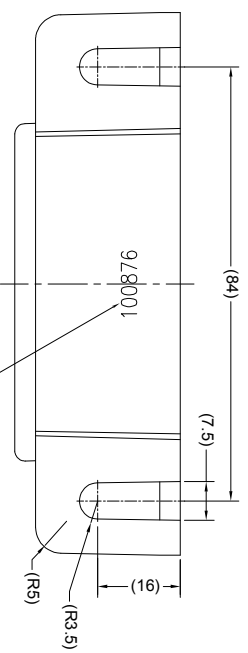
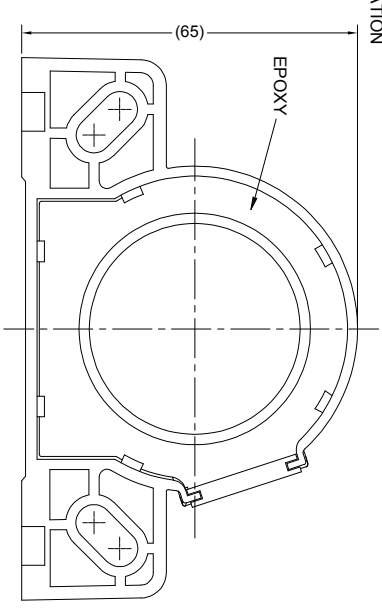
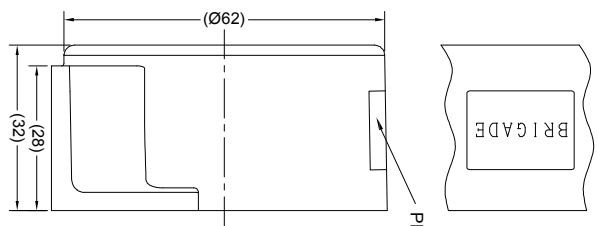
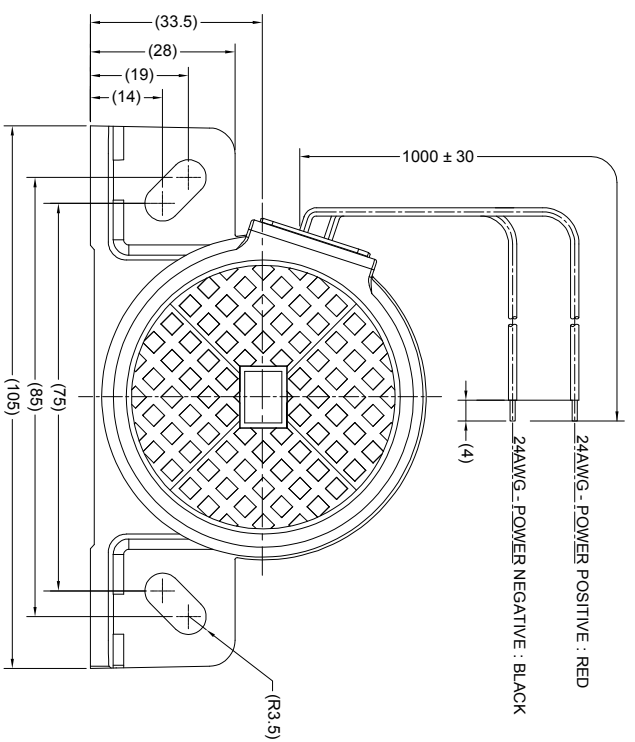


Revision Notes			
R1 - NOTES UPDATED TO INCLUDE LABEL DETAILS AS PER ECR CR-A27L.			
AP.A. KILDA	Drawn/BATES	Checked/M BUTLER	Approved/GPLITH
			Date: 28/08/14



- SPECIFICATION**
1. RATED VOLTAGE: 12 AND 24 VOLTS DIRECT CURRENT (WORKING VOLTAGE RANGE 9 THRU 32 VOLTS)
  2. RATED CURRENT: 0.3 AMPERES OR LESS
  3. SOUND PRESSURE:
    - 3.1. 87±4 DECIBELS AT TEST VOLTAGE OF 14 AND 28 VOLTS (AS MEASURED AT A DISTANCE OF 1.2M AND AT A HEIGHT OF 1.2M ABOVE THE GROUND.
    - 3.2. 102±4 DECIBELS AT TEST VOLTAGE OF 14 AND 28 VOLTS AS CONTROLLED ITEM (AS MEASURED BY SOUND BOX)
  4. FREQUENCY: 1600±200HZ AT TEST VOLTAGE OF 14 AND 28 VOLTS
  5. INTERMITTENCE: 80±15 CYCLES PER MINUTE AT TEST VOLTAGE OF 14 AND 28 VOLTS
  6. DURABILITY: TO FREE ABNORMALITY AFTER BEING TESTED FOR 500 HOURS CONTINUOUSLY AT TEST VOLTAGE OF 32 VOLTS
  7. RANGE OF OPERATING TEMPERATURE: -40°C THRU +85°C
  8. ENVIRONMENT TESTS PER SAEJ994

**NOTES:**

1. FOR PRODUCT LABEL REFER TO LATEST REVISION OF DRAWING BE-002833-XX-14
2. FOR GIFTBOX LABEL REFER TO LATEST REVISION OF DRAWING BE-002834-XX-14
3. "R TRIANGLE" INDICATES CHANGES MADE TO THE REVISION AS IDENTIFIED IN REVISION NOTES.

**PROPRIETARY NOTICE**

THIS DESIGN AND TECHNICAL INFORMATION APPEARING ON THIS DRAWING IS THE PROPERTY OF BRIGADE ELECTRONICS, AND IS DISCLOSED IN CONFIDENCE. IT IS NOT TO BE COPIED, REPRODUCED, REVEALED TO OR EXPLOITED BY OTHERS, EITHER IN WHOLE OR IN PART WITHOUT THE EXPRESS WRITTEN CONSENT OF BRIGADE ELECTRONICS.

<p>Angle of Projection Third Angle</p>	Assembly PI Approval	Approved by S.MATTHEWS	Checked by GPLITH	Drawn by DKERAL
	Status RELEASED	Units mm	Scale N/A	Released BA191-87
	Part No 2736			BA-530
				BE-002195-01-12